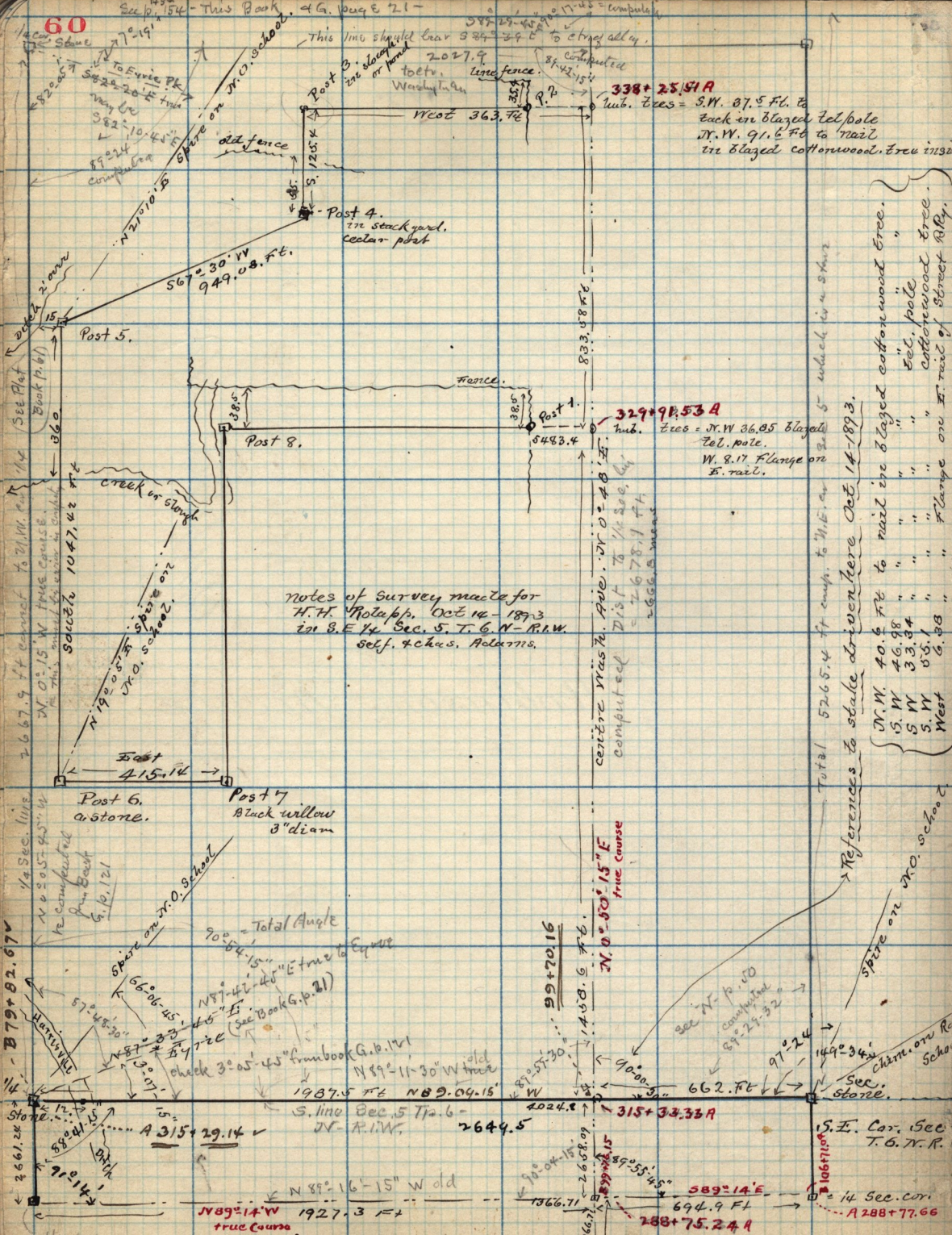


Sec. 14 - This Book of G. Doug E 21 -



notes of survey made for
 H. H. Rotap, Oct 16 - 1893
 in S.E. 1/4 Sec. 5, T. 6 N. R. 1 W.
 self. & Chas. Adams.

338+25.51 A
 sub. trees = S.W. 87.5 Fl. E

each on blazed tel pole
 N.W. 91.6 Fl to trail
 in blazed cottonwood tree

329+91.53 A
 sub. trees = N.W. 36.95 blazed
 tel. pole
 W. 8.17 Flange on
 E. rail.

Total 526.54 ft comp. to N.E. or S.E. which is a star

References to stake driven here Oct. 14-1893.

- N.W. 40.6 Fl to nail in blazed cottonwood tree.
- S.W. 46.98 " " " "
- S.W. 33.84 " " " "
- S.W. 55.1 " " " "
- West 6.88 " " Flange on E. rail of street R.R.

N 89° 14' W 1927.3 = true Course

True Course
 N. 0° 50' 15" E

S.E. Cor. Sec 5
 T. 6 N. R. 1 W.

14 Sec. cor.
 A 288+77.66

connect A. 275+08.53

589° 14' E
 694.9 FT

288+75.24 A

315+33.32 A

99+70.16

1458.6 Fl

89° 55' 30"

2024.2

1366.71

1960.71

1366.71

90° 00' 00"

662.76

97° 24'

1492.34

1067.00

99° 24' 32"

662.76

97° 24'

1492.34

1067.00

see N.P. 100
 computed
 89° 24' 32"

662.76

97° 24'

1492.34

1067.00

90° 00' 00"

662.76

97° 24'

1492.34

1067.00

99° 24' 32"

662.76

97° 24'

1492.34

1067.00

90° 00' 00"

662.76

97° 24'

1492.34

1067.00

99° 24' 32"

662.76

97° 24'

1492.34

1067.00

90° 00' 00"

662.76

97° 24'

1492.34

1067.00

99° 24' 32"

662.76

97° 24'

1492.34

1067.00

90° 00' 00"

662.76

97° 24'

1492.34

1067.00